

export sim

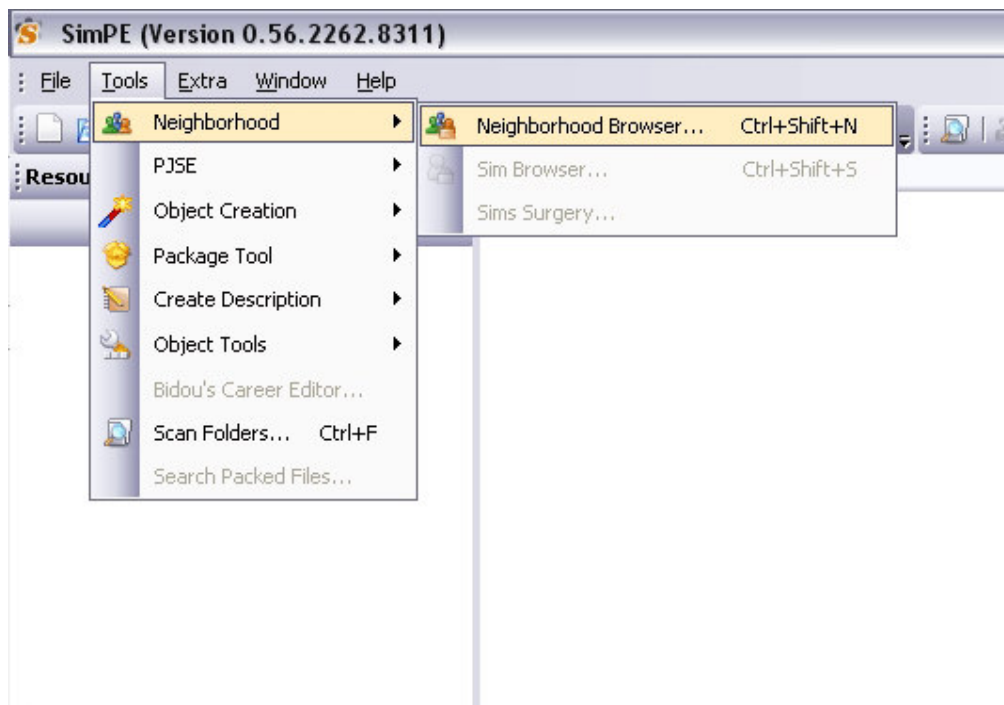
Before starting...

To follow this tutorial you need

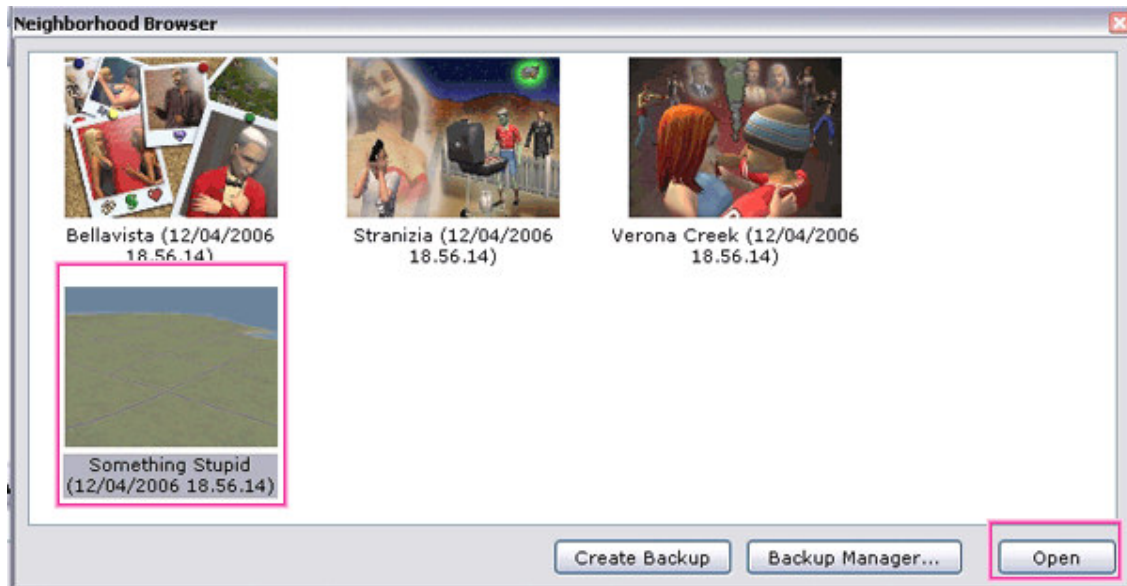
- Simpe 0.56 or higher (here we use 0.56) <http://sims.ambertation.de/> remember that Simpe require Microsoft .NET Framework to work. You can find .NET Framework on the Microsoft web site.
- Bodysop (that come with the game).

First: SimPe

Select from the menu *Tools* → *Neighborhoods* → *Neighborhoods Browser*.



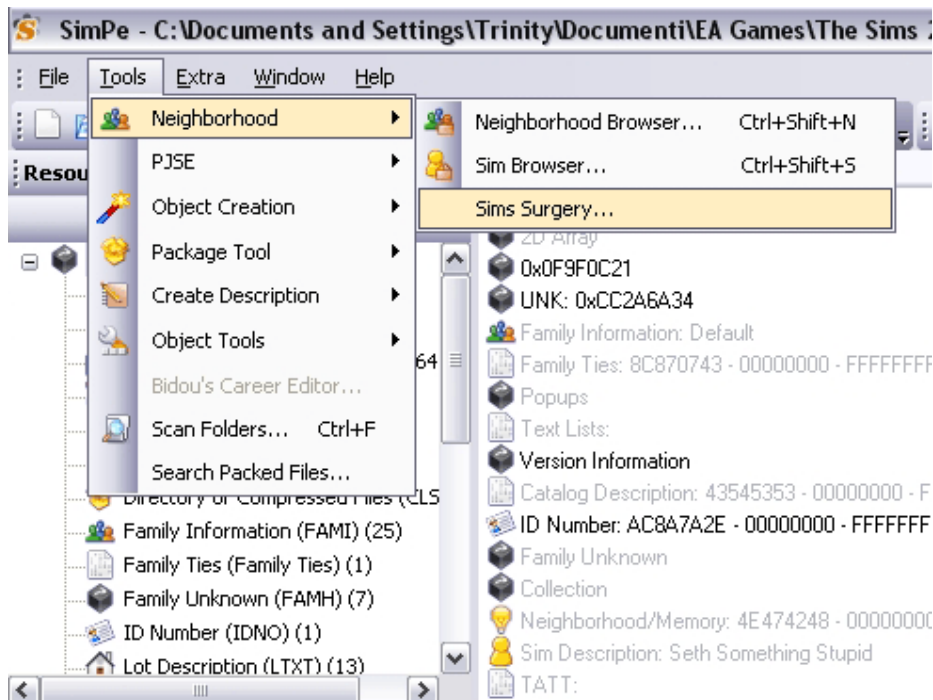
Now Simpe open a small window as the follow:



Select the Neighborhoods where the sim you want to extract live and press *Open*.

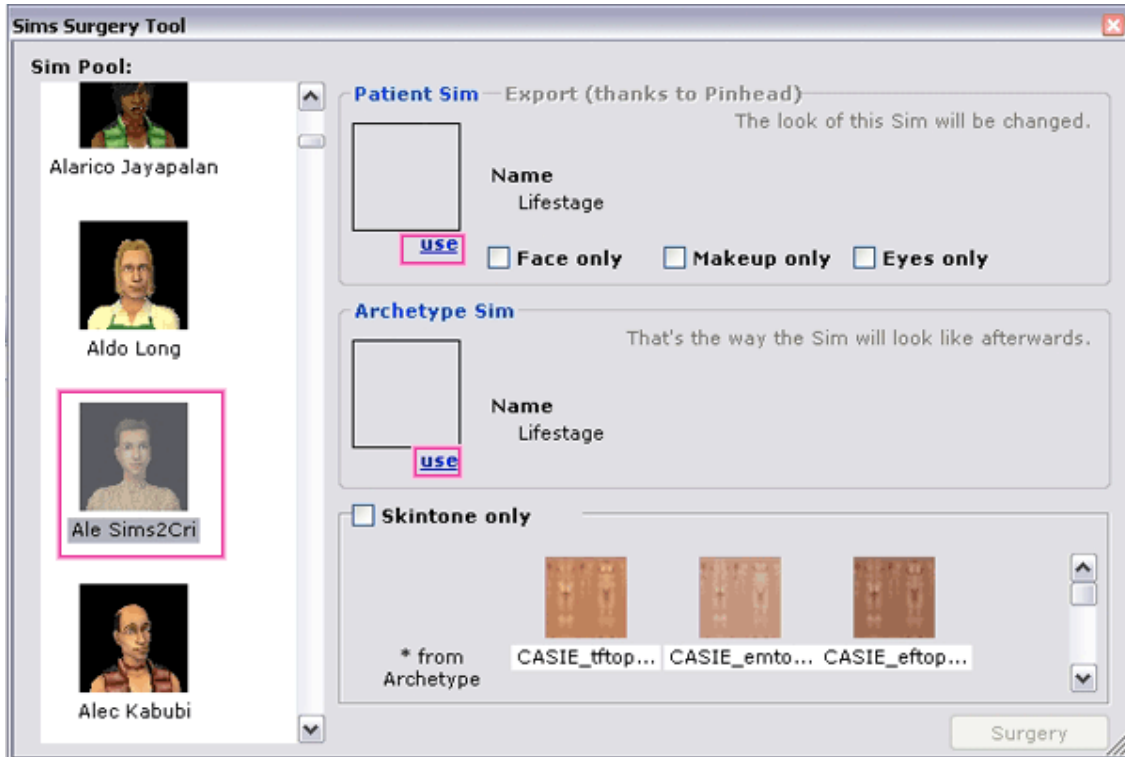
Simpe is loading. Be patient.

Then select from the menu *Tools* → *Neighborhoods* → *Sim Surgery*



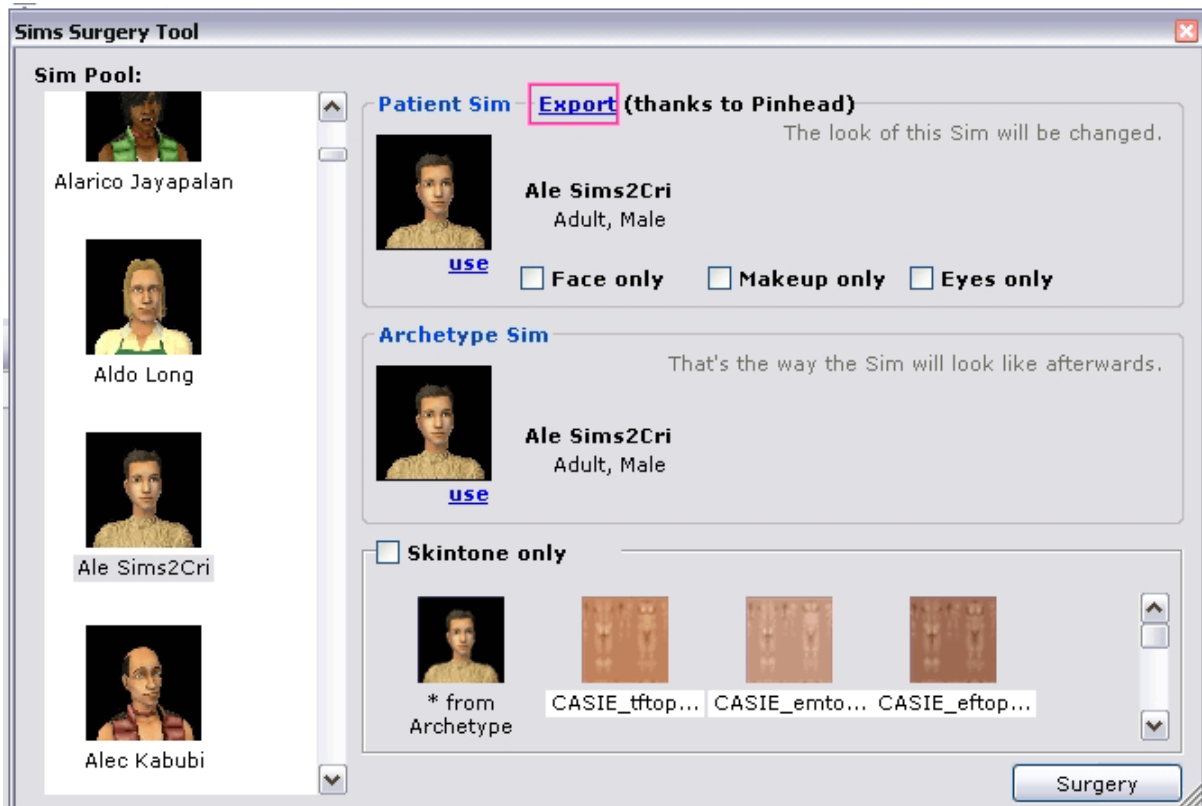
Simpe is loading again. Be patient once again.

Now you can see a window as the follow:



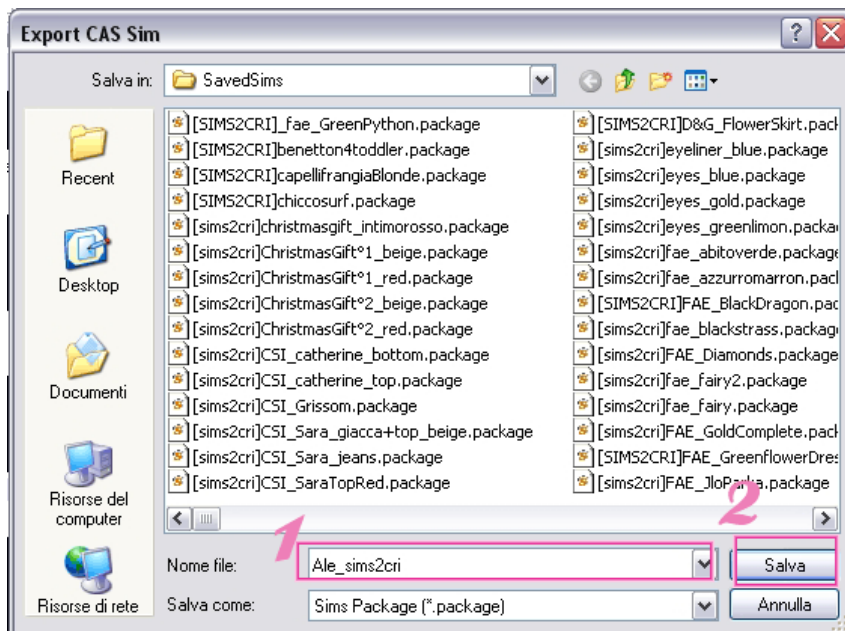
Select from the left menu the sim you want to extract. Then press on "Use" both in the Patient Sim and in the Archetype Sim.

Now you can see something like this:



You should extract the sim, so press on "Export" at the top of the window.

A pop-up will appear:

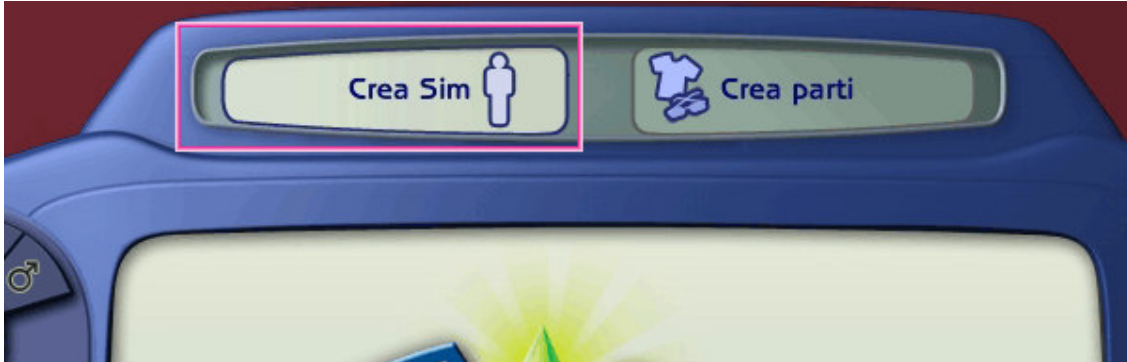


You should choose a name of sim file. It will be saved on SavedSims directory.

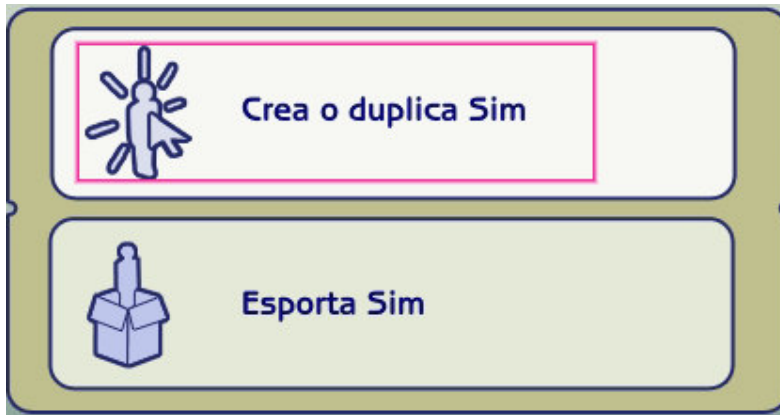
We have finish with Simpe. Close and open Bodyshop.

Second: Bodyshop

Go to "Create a Sim" mod.



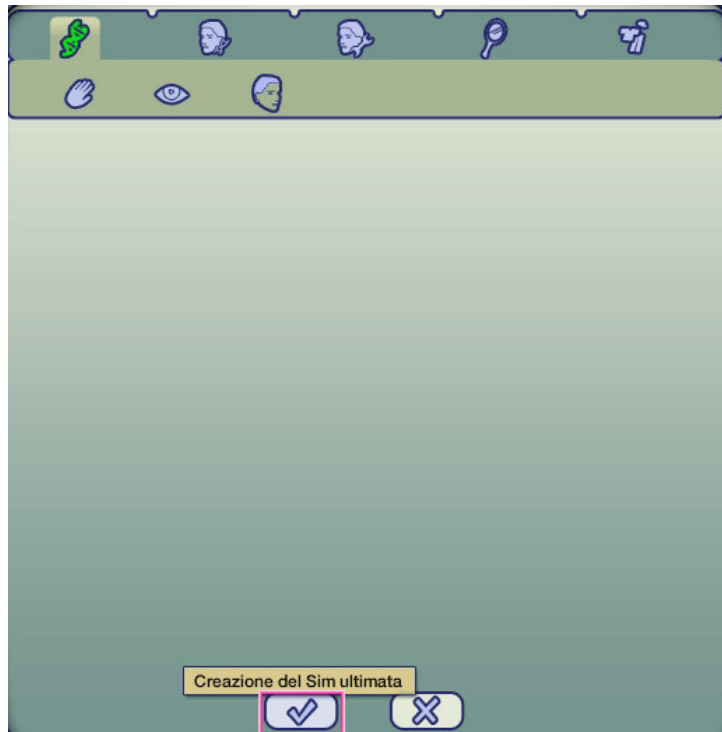
Now select "Create or Clone a Sim".



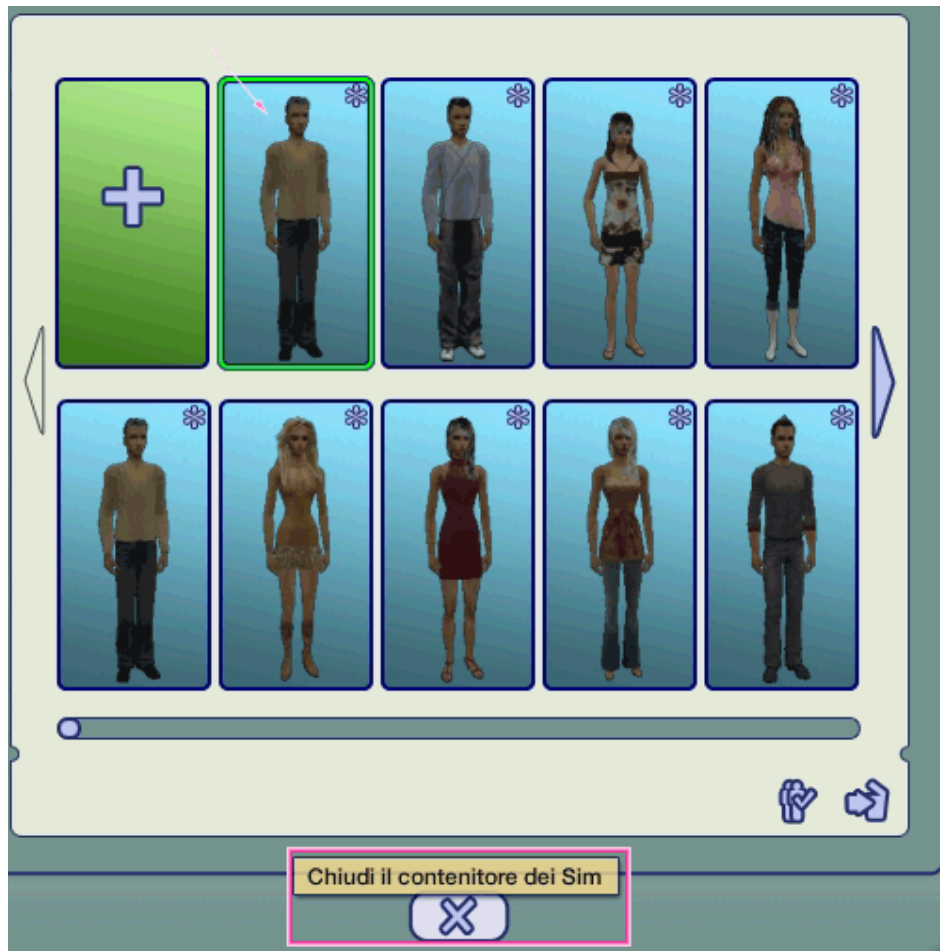
Select the sim that you have just extracted with Simpe and then press "Clone".



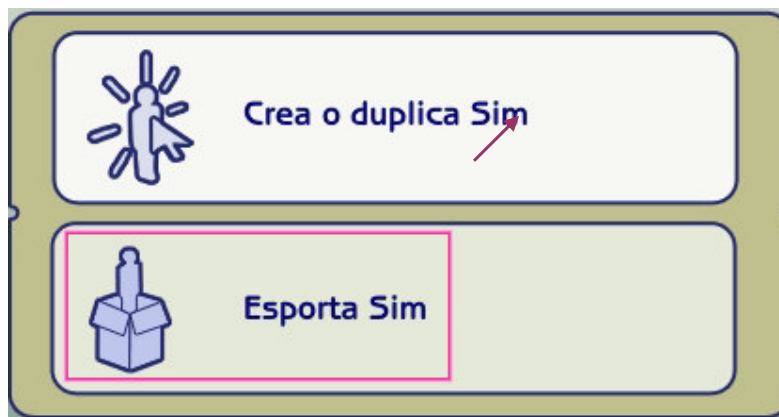
Now press on "Finish".



You can see now the sim you have just created, and press exit to return to main menu.



This time select "Export Sim".



Select the last sim created and press on export.

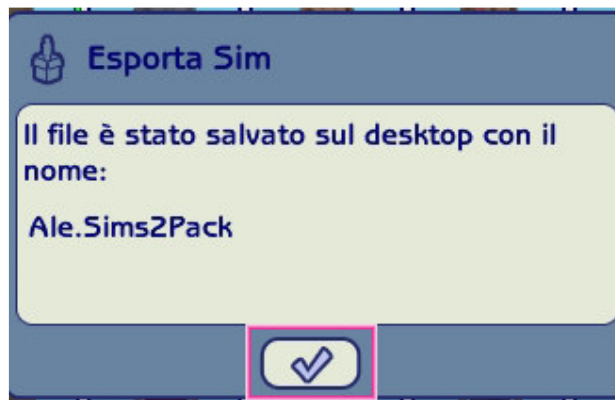


A pop-up appear. This ask to you to give a name to the sim file and a description.



After doing that, press the confirm button.

A pop-up alert you that your sim was successful saved on your desktop.



Thanks to:

Simpe <http://www.ambertation.de/>
and Pinhead for the export tool of Simpe.